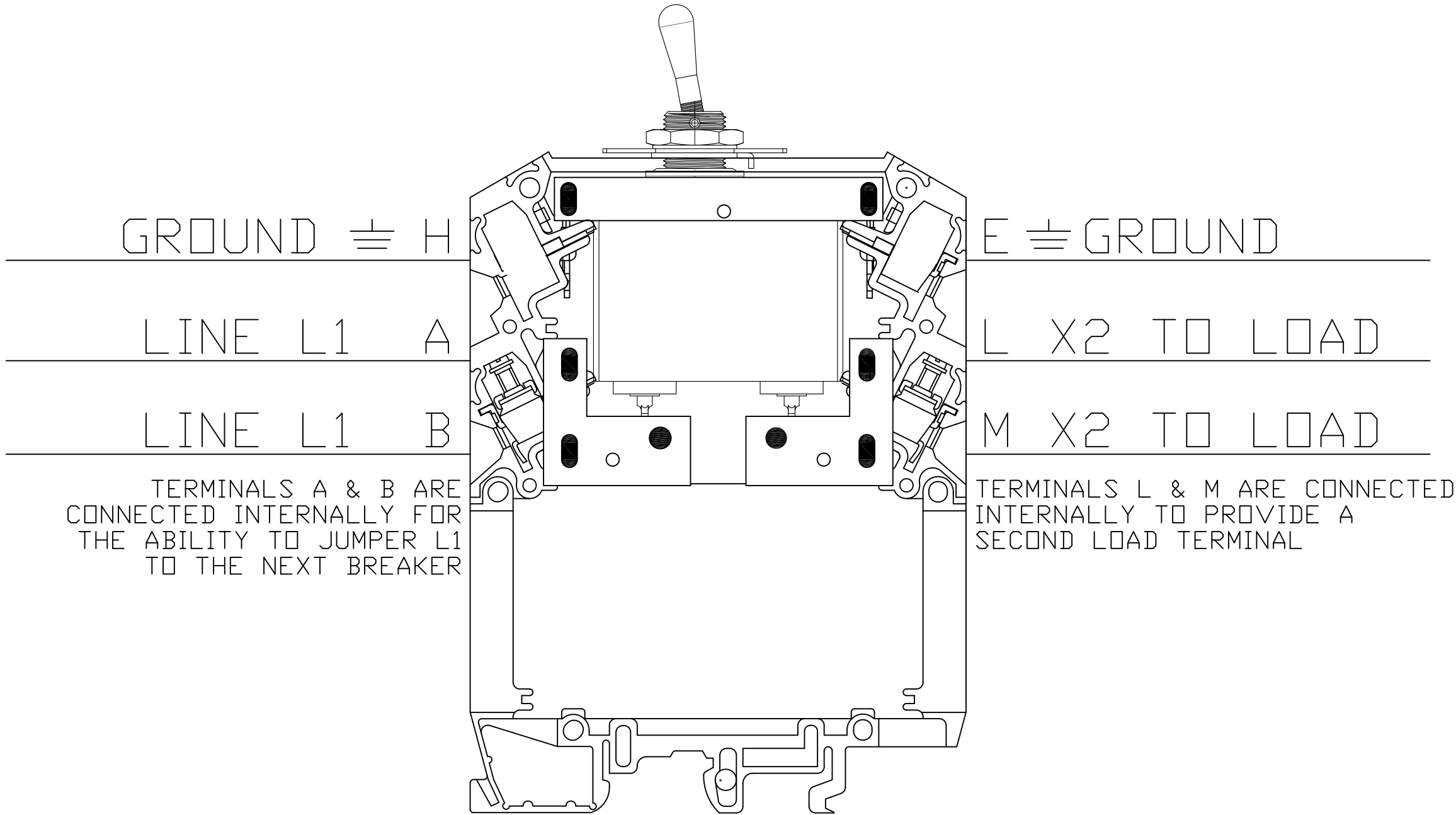


# CRI-APBM BREAKER WIRING DIAGRAM



TERMINALS A & B ARE CONNECTED INTERNALLY FOR THE ABILITY TO JUMPER L1 TO THE NEXT BREAKER

TERMINALS L & M ARE CONNECTED INTERNALLY TO PROVIDE A SECOND LOAD TERMINAL

REV	DESCRIPTION	DATE	CHG BY	APPVZ
A	ORIGINAL RELEASE	05/21/16	TWV	CE
REVISIONS				

CUSTOMER		
CLASS 1, DIVISION 2 CIRCUIT BREAKER WIRING DIAGRAM		
DWG. NO.	SIZE	REVISION
CRIAPBM-WIRING		A
SCALE NONE	SH. 1 OF 1	

**CRI-Circuit Protection Products, LLC**

1520 Kuebel Street - Suite 1  
Harahan, Louisiana 70123  
Telephone: (504) 734-1147 (800) 229-1147  
www.cri-explosionproofbreakers.com